

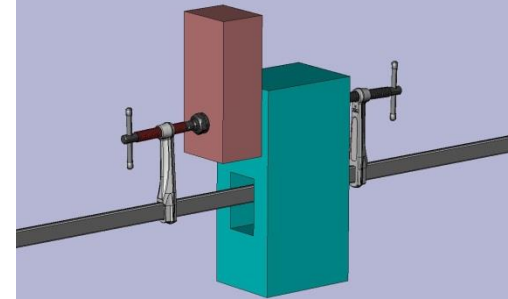
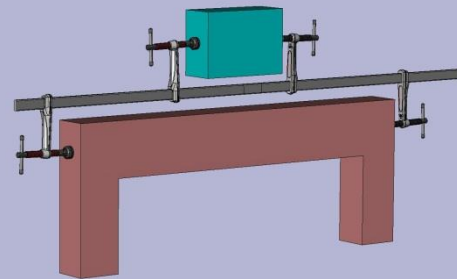
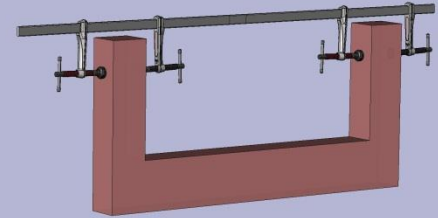
BESSEY Product Training



BESSEY Tools North America SLV & GSV Double Force Clamps

Double Force All-Steel Clamps

- Modular design ensures high versatility
- Accommodates large workpiece widths
- Based on standard 28x11 mm & 30x15 mm rails
- Rails and sliding arms are interchangeable
- Suitable for clamping and spreading
- Centered positioning is possible
- Fasteners on the end of the rail are easily removeable



Double Force All-Steel Clamps

<u>Item</u>	<u>Clamp. Cap.</u>	<u>Depth</u>
SLV100M	39.50 In	4.75 In
SLV150M	60.00 In	4.75 In
SLV200M	79.00 In	4.75 In
GSV300M	118.00 In	5.50 In

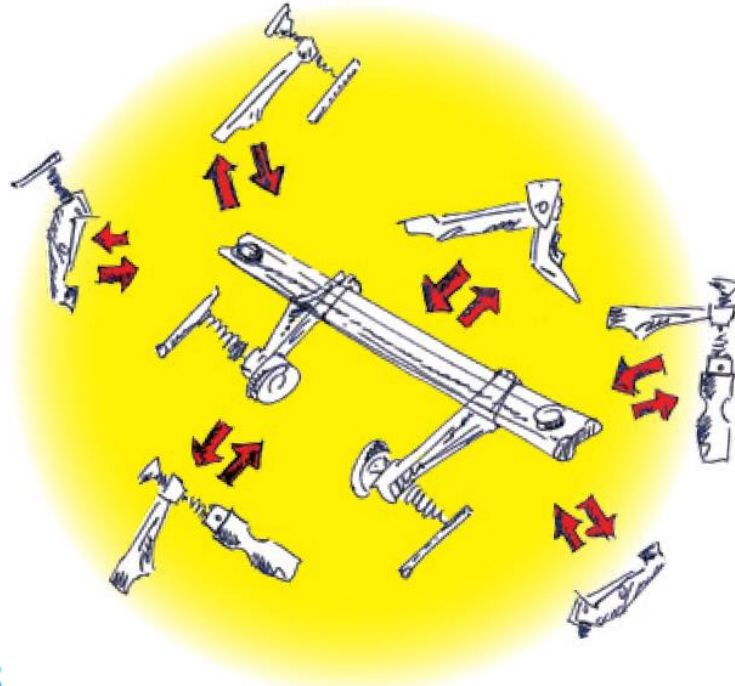
- Base clamp includes rails and sliding arms like the standard all-steel clamps. Includes T-handle and MorPad
- Other sliding arm variants can be combined easily: lever, wooden handle and T-handle with more depth



Double Force All-Steel Clamps

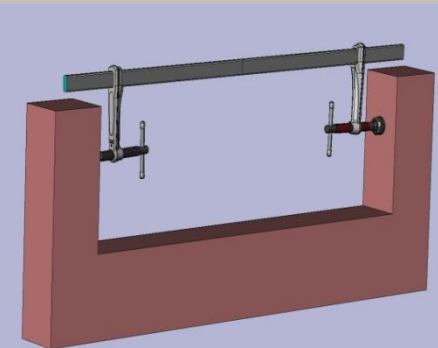
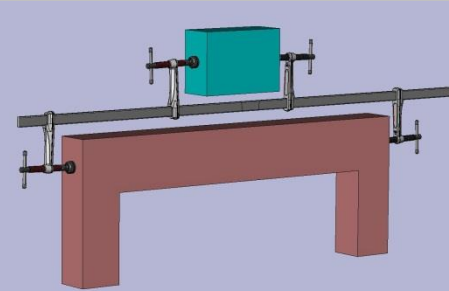
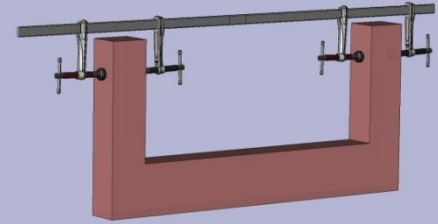


Simply better.



2 minutes
+ **4** rails
+ **6** arms

a myriad of options



Double Force All Steel Clamps



Simply better.

SLV Optional Arms

3101426: Wooden Handle 4.75 In depth

3101337: Lever Handle, 4.75 In depth

3101338: T-Bar handle , 4.75 In depth

SLV Optional Bar Lengths

3101731: 47.00 In Length

3101732: 67.00 In

3101733: 87.00 In



Double Force All Steel Clamps



Simply better.

GSV Optional Arm Accessories

3101329: 4.75 In depth

3101330: 5.50 In

3101331: 7.50 In



GSV Optional Bar Lengths

3101612: 130.00 In Length



Double Force All-Steel Clamps



Simply better.

Quick Overview

Range

SLV100M

SLV150M

SLV200M

GSV300M

Rail and Sliding arms also sold seperately

Pack quantities

1 piece

Country of Origin

Germany

Target Industries

Container, vehicle, hall and metal construction, fitters, joiners, carpenters and more





Simply better.

BESSEY. Simply better.

BESSEY Tools North America
www.besseytools.com
