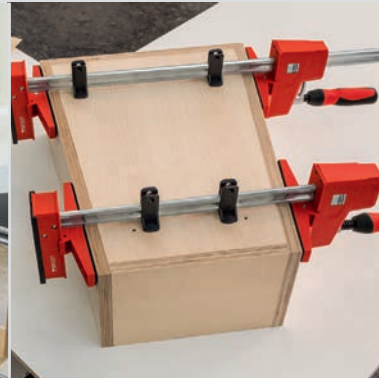




Simply better.



REVOLUTION



**K Body REV0 parallel clamps
KRE/KREV**

The **EVOLUTION** of the K Body REVO parallel clamps

With greater power and safety in a new design



Precise and gentle

Workpieces with sensitive surfaces can be clamped and spread exactly parallel to each other – even behind and on the side of the rail. Corners and recessed edges as well as pointed and round surfaces can also be perfectly aligned:

- due to extremely large clamping surfaces that are attached perpendicular to the rail
- due to three removable pressure caps that are repellent to glue, and also resistant to paint and grease solvents
- due to workpiece supports that prevent the workpiece from coming into contact with the rail



Powerful and safe

They securely clamp with a clamping force of up to 8.000 N:

- due to the metal-reinforced plastic housing
- due to the optimised sliding arm with double slide protection: It holds the clamp reliably with the set clamping force and prevents any unintentional slipping of the sliding arm in the unclamped condition



Versatile and well thought out

The clamps provide an enormous number of possible applications:

- due to ingenious accessories, such as tilting adapter, frame press set, clamp extension and table clamp
- the ergonomically formed 2-component symmetrical plastic handle with hexagon socket means the clamping force can be comfortably applied (max. torque 17 Nm)
- the continuously adjustable head for the KREV Vario version enables the clamp to be positioned in the middle of the workpiece for optimum weight distribution

The **EVOLUTION** of the K Body REVO parallel clamps

More than a clamp – a clamping concept!



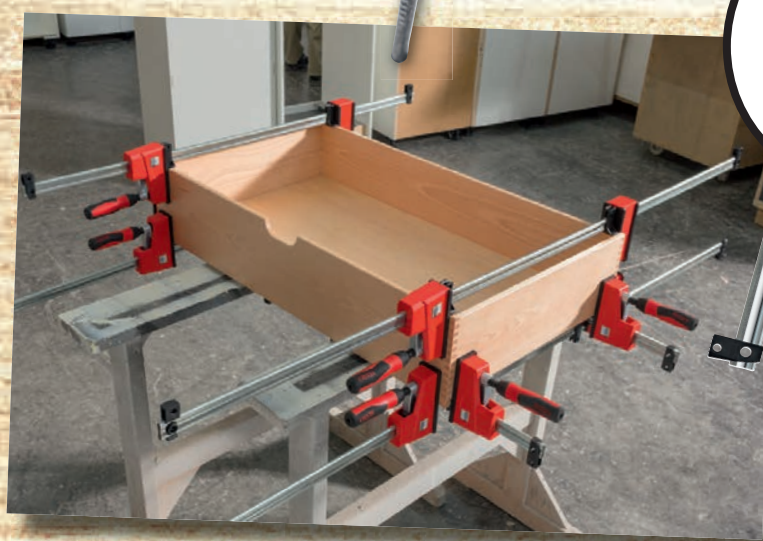
Learn more about the
BESSEY K Body parallel clamp
on our YouTube-channel:



REVOLUTION

The large, perfectly parallel jaw faces are characteristic of the BESSEY K Body REVO parallel clamp. It allows easy clamping and spreading of sensitive surfaces at right angles. Even round and curved workpieces. And the best thing is: thanks to their extra-large contact surfaces, the clamp is universally applicable – even behind and to the side of the high-quality profiled rail. This allows you to clamp in locations that conventional screw clamps are unable to reach.

However, the K Body REVO parallel clamp KRE can be used for many more applications. It is not “just a clamp”, but rather, part of a comprehensive clamping concept. The REVO is made even more versatile by the well considered accessories.



Vario K Body REVO KREV

A tilting of the workpiece can be avoided. Because the infinitely adjustable jaws allow the central positioning of the clamp on the workpiece, which is particularly beneficial in the case of long clamps.



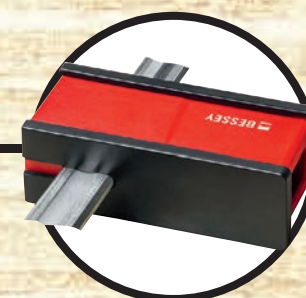
K Body adapter KR-AS

The soft faced tilting pads can be attached to the clamping jaws and are infinitely adjustable within a tilting range of -15 or +15.



K Body extender KBX

Two becomes one: with the easy-to-use extension made of sturdy aluminum the clamping width can be increased up to 5 m.



Variable jaw KRE-VO

Suitable for all BESSEY K Body REVO parallel clamps KREV and KRE as well as KRV and KR.



Framing set KP

A set of four 90 degrees clamping blocks for repetitive work. The clamping pressure can be set separately for each corner.



Table clamp TK6

Securely attaches the clamp to the work surface.

- Clamping force up to 8.000 N
- Very large parallel clamping surfaces with 3 removable pressure caps
- Metal-reinforced plastic housing and optimised sliding arm with double slide protection for more power and safety: The set clamping force is maintained and the sliding arm cannot unintentionally slip in the unclamped condition
- Can be converted without tools for spreading tasks
- High-quality 2-component symmetrical plastic handle with hexagon socket for the comfortable application of the clamping force (max. torque 17 Nm)
- KREV with continuously adjustable and fixable upper section for optimum positioning on the workpiece



- Variable jaw KRE-VO suitable for all BESSEY K Body REVO parallel clamps KRE and KREV as well as KR and KRV



- KP Framing System (from 30 cm to 250 cm/12"-98") with four 90° KP Blocks
- Separately adjustable clamping force with 2 inserted clamps per corner
- Lightweight / easy to assemble
- On carded hang pack



- Adapter with tilting clamping jaws with a tilt range of -15° to +15°
- Clamping on sloping and parallel surfaces
- On carded hang pack





- Connect any two K Body parallel clamps to increase the clamping capacity. The connector is made of robust aluminum.
- Comes with two red adapters. Use with Series KRE / KREV and KR / KRV. Not required for joining Series K.
- On carded hang pack

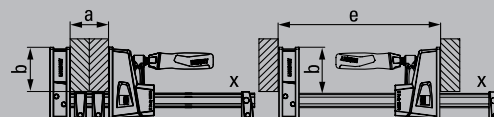


- Especially for DIY applications and domestic appliances
- Special accessory for angle clamps WS 3 / WS 6, screw clamp S 10 and K Body REVO parallel clamps KRE / KREV and KR / KRV to hold them to a work surface edge



K Body REVO KRE and Vario K Body REVO KREV

Order-No.	< a ->	< b ->	< e ->	< x ->			
	mm	mm	mm	mm	kg	qty.	V3
KRE30-2K	300	95	255-390	29 x 9	2.15	2	
KRE60-2K	600	95	255-730	29 x 9	2.76	2	
KRE80-2K	800	95	255-930	29 x 9	3.10	2	
KRE100-2K	1000	95	255-1130	29 x 9	3.45	2	
KRE125-2K	1250	95	255-1355	29 x 9	3.87	2	
KRE150-2K	1500	95	255-1610	29 x 9	4.28	2	
KRE200-2K	2000	95	255-2080	29 x 9	5.09	2	
KRE250-2K	2500	95	255-2580	29 x 9	6.05	2	
KREV100-2K	1000	95	260-1130	29 x 9	3.85	2	
KREV150-2K	1500	95	260-1610	29 x 9	4.25	2	
KREV200-2K	2000	95	260-2080	29 x 9	5.30	2	
KREV250-2K	2500	95	260-2580	29 x 9	6.30	2	



Variable jaw KRE-VO

Order-No.	Suitable for			
		kg	qty.	V3
KRE-VO	KRE / KREV / KR / KRV	0.59	1	

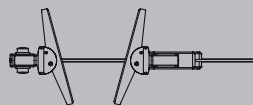
Framing set KP

Order-No.	Suitable for			
		kg	qty.	V3
KP	KRE / KREV / KR / KRV / K	0.55	12	

Contents: 4 rail couplings and 4 adapters

Tilting K Body clamp adapter KR-AS (2 pcs./bag)

Order-No.	Suitable for			
		kg	qty.	V3
KR-AS	KRE / KREV / KR / KRV	0.18	12	



K Body Extender KBX

Order-No.	Suitable for			
		kg	qty.	V3
KBX20	KRE / KREV / KR / KRV / K	0.75	12	

Table clamp TK6

Order-No.	Suitable for			
		kg	qty.	V3
TK6	KRE / KREV / KR / KRV	0.10	10	